

ELEVATION EXHIBIT

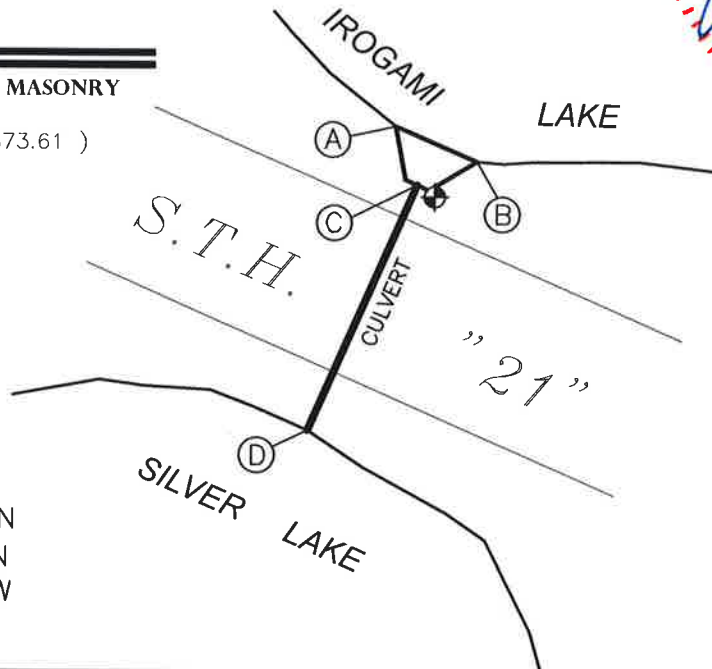
FOR SILVER LAKE MANAGEMENT DISTRICT

ELEVATION TABLE (NGVD 29)

POINT #	ELEVATION	DESCRIPTION
A	867.64	CONCRETE APRON CORNER
B	867.70	CONCRETE APRON CORNER
C	867.61	INVERT CONC. CULVERT (NORTH SIDE)
D	867.41	INVERT CONC. CULVERT (SOUTH SIDE)

BENCHMARK = 

ALUMINUM CAP NE TOP MASONRY
ENDWALL, ELEV. = 873.58
(DOT RECORD ELEV = 873.61)



SITE 1

CULVERT LOCATION
44° 03' 38.58" N
89° 14' 12.12" W



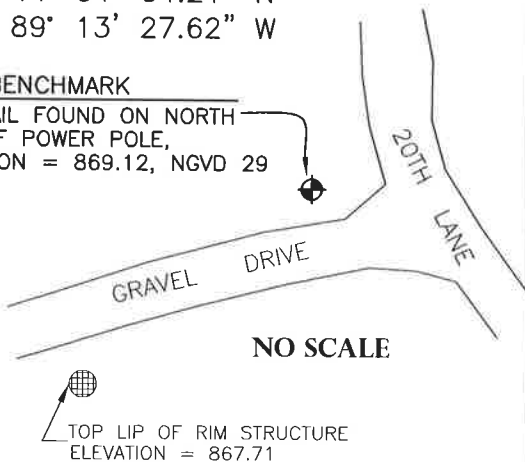
NO SCALE

SITE 2

OVERFLOW STRUCTURE LOCATION
44° 04' 04.21" N
89° 13' 27.62" W

BENCHMARK

60D NAIL FOUND ON NORTH
SIDE OF POWER POLE,
ELEVATION = 869.12, NGVD 29



SURVEYOR'S NOTES

ELEVATION DATA WAS COLLECTED ON JULY 12, 2018

SITE BENCHMARKS FOR EACH SITE WERE ESTABLISHED BY GPS OBSERVATIONS AND CONTROL SUPPLIED BY WISCONSIN DOT. ELEVATION DATA ON STRUCTURES WERE ESTABLISHED BY TOTAL STATION IN RELATION TO EACH SITE BENCHMARK.

THE SITE BENCHMARKS FOR EACH SITE IN RELATIONSHIP TO ONE ANOTHER, ARE SUBJECT TO GPS QUALITY ERROR AND WERE NOT VERIFIED BY A CLOSED LEVEL CIRCUIT BETWEEN SITE 1 AND 2.

ELEVATIONS WERE CONVERTED TO NGVD29 USING "VERTCON" CONVERSION TOOL, NATIONAL GEODETIC SURVEY.

EQUIPMENT USED

TRIMBLE R8 GNSS RECIEVER
TRIMBLE S6 ROBOTIC TOTAL STATION
TRIMBLE TSC3 DATA COLLECTOR



Point of Beginning

Civil Engineering
Land Surveying
Landscape Architecture
Jordan G. Brost, PLS #3009
5709 Windy Drive, Suite D
Stevens Point, WI 54482
715.344.9999(Ph) 715.344.9922(FX)

THIS INSTRUMENT WAS DRAFTED BY JORDAN BROST
AND DRAWN BY JORDAN BROST

FIELD BOOK 66 PAGE 30-31

JOB # 18.736

SHEET 1 OF 1 SHEETS